



GLOBAL ORE DISCOVERY

Integrated Geoscience Solutions for
the Minerals & Energy Industries



29
Cu
Copper
63.546

Lead
207.2
18
4

47
Ag
Silver
107.868

79
Au
Gold
196.967

15
P
Phosphorus
30.973

6
C
Coal
12.011

30
Zn
Zinc
65.38

Exploration Consultants

Unit 6/1 Fort Lane,
Milton QLD 4064
Australia

Phone: 61 7 3613 8800

Web: www.globalorediscovery.com

Email: contactus@globalorediscovery.com

INTEGRATED EXPLORATION SOLUTIONS

Geoscience Exploration Specialists

Our team of specialist consultants leverage their international experience in a wide range of deposit classes & commodities to bring you innovative exploration solutions.

Program Design and Management

Seamless integration of program design, management, technical evaluation & field operations to deliver quality project outcomes from greenfields to resource definition.

Portfolio Building From Target Generation & Project Evaluation

Global Ore has a track record for building quality project portfolios through innovative target generation in mature & greenfields terrains globally.

- Precious Metals – Argentina, Chile, Australia, Tanzania, Kyrgyzstan, Mongolia
- Base Metals – Chile, Argentina, Brazil, Mexico, Australia, Kyrgyzstan, India, South Africa
- Uranium – Botswana, Namibia, Tanzania, Australia
- Coal – Bowen, Maryborough, Clarence Moreton, Surat, Galilee Basins
- Satellite/Core Scan/ In-field Handheld Spectrometers

Imagery and Spectral Products

We specialise in survey design, acquisition, processing & interpretation to focus your programs.

- High resolution imagery bases
- Alteration mapping
- Digital elevation models

Customised Data Capture, QA/QC & Management Systems

We identify, adapt or design the best equipment, software & systems for your company's individual exploration needs.

GIS Analysis

A core speciality of our group is to synthesise large complex datasets to produce unique outcomes for exploration success.

Geological Modelling

We build 3D models of geology, alteration, mineralisation and structure to enhance exploration effectiveness and guide exploration programs.

....FOCUSED ON YOUR EXPLORATION SUCCESS

Geoscience Specialists

- Multiple Deposit Classes
- Range of Commodities
- Cu, Au (Mo) - Porphyry, IOCG
- Au, Ag (Cu) - Epithermal - Low, Intermediate & High Sulphidation
- Cu - Mt Isa style & Strataform
- Pb, Zn - Proterozoic
- U - Paleochannel, Playa Lake, Alaskite
- Coal - Metallurgical & Thermal



Program Design & Management

- Geophysics
- Geochemical
- Drilling
- Statutory Reporting



Target Generation

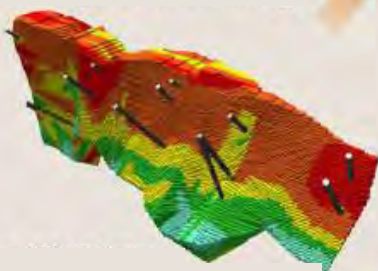
- Tenement – District- Deposit
- Portfolio Building
- Hydrothermal Systems Analysis
- Drill Targeting
- Fresh Concepts

Satellite/Airborne Imagery

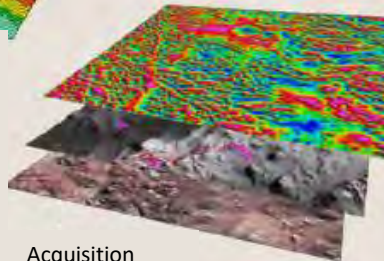
- Alteration Mapping Landsat, ASTER, Hymap
- Hi Resolution Bases Worldview, Geoeye, SPOTMaps, Peliaides, ALOS
- Elevation Products SRTM, SPOT, ASTER, ALOS, Worldview, Quickbird



Geological Modelling



GIS Data



- 2D-3D Modeling
- Geology
- Alteration
- Structure
- Mineralisation
- 3D Drill hole design
- Porosity/Permeability
- Temperature/heat flow
- Acquisition
- Compilation
- Interrogation
- Interpretation

Customised Data Capture & Management



Xplore M60

- GPS Field Mapping
- Data Dispatch
- QA/QC
- Integration
- Validation
- Secure Storage

PROJECT GENERATION AND EXPLORATION EXPERIENCE

Project Generation and Portfolio Building

- Research, develop and apply new exploration concepts to terrain-scale analysis
- Acquire, collate, process and interpret large terrain-scale datasets and build unique GIS-based targeting frameworks
- Interpret tectonic and magmatic controls on mineralisation
- Identify and prioritise prospective mineral systems, recommend 3rd party project acquisitions and secure free-ground.

Exploration Program Management

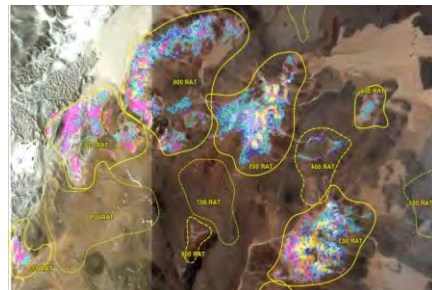
- Provide managers extensive detailed exploration budgeting support including items, people time, contractor costs, expenditure timeline and expected program outcomes
- Collaborate with exploration teams to determine and arrange technical details including field sample collection protocols and laboratory analysis methods
- QA/QC process and control sample selection
- Geophysical survey acquisition specification and data processing
- Remote sensing and alteration/spectral data collection, processing and mineralisation vector analysis
- Collaborate with project managers to monitor exploration results, supervise real-time priority changes and maintain cost control
- Integrate validated exploration program results with previous GIS datasets and maintain version control
- Analyse integrated datasets in 2D and 3D and rank priority targets
- Provide constant updates and recommendations on exploration progress to management, re-prioritise exploration activities and budgets based on results

JV Operational Management

- Collaborate with in-house teams to design and plan JV exploration programs
- Work alongside project managers to coordinate senior exploration staff and field teams to deliver on exploration programs
- Monitor and reconcile exploration budgets against expenditure and provide cost control solutions / recommendations to management
- Collate and organise exploration data and ensure valid information is used for JV partner reporting and public news releases
- Develop exploration models and provide integrated geological analysis to support geologists and country managers
- Prepare technical presentations and present JV exploration progress and technical updates at quarterly meetings

Project Scale Targeting, Program Design and Integrated Results Analysis

- Work with in-house GIS team to compile unique open file geological, geochemical, remote sensing and geophysical datasets at a prospect scale
- Process, interpret and integrate geophysics and remote sensing data to define alteration zonation, structural fabric, geochemical anomalies and geologically permissive settings to design reconnaissance scale field programs and focus field exploration teams within large scale systems
- Undertake interactive real time analysis of results with field teams to refine exploration programs while teams are in the field to maximise results from programs and improve exploration cost effectiveness
- Compile, validate, process and interpret first pass field geological and geochemical data for design of detailed follow-up field programs including geophysics programs.
- Liaise with geophysical survey providers and data processing specialists to deliver products to specification and in the required format to facilitate integrated interpretation
- Collaboratively with management and senior geologists review claims for potential relinquishment
- Work with management, geochemical database staff and geologists to define program specific sampling methodology, assay sample suite, analytical techniques and standard insertion rates to deliver high quality exploration results that are reportable by a CP/ QP
- Build project specific technical interpretations for use in business development materials



*Alteration modelling
& target definition*



Spectral processing & field imagery

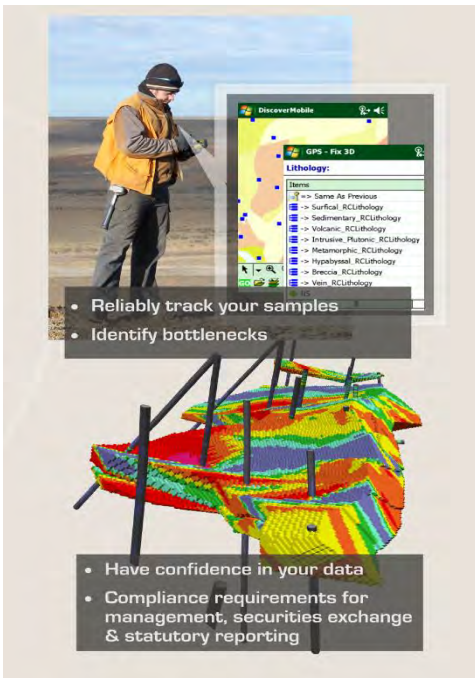
PROJECT GENERATION AND EXPLORATION EXPERIENCE

Geochemical Database Management and Public Company Reporting Compliance

- Advise on QAQC (quality assurance and quality control) protocols and laboratory methods specific to individual projects, mineralisation-style and exploration programs.
- Design, budget and maintain a geochemical and geological relational database specific to field and QAQC requirements
- Train field and geologists in data capture, validation despatch and data distribution protocols
- Deliver timely QAQC reports on an 'as-received' batch basis to CP/QP, JV partners and project geologists, highlighting any potential issues with assay results and/or laboratory performance.
- Ensure databases are compliant with international standards for public news releases and resource estimation reporting:
 - ✓ Relate sample information received from field teams to laboratory assay results
 - ✓ Export validated data for immediate use in interpretation and program planning
- Provide recommendations on re-analysis protocols so samples or batches that fail QAQC initially may later be validly included by CP / QP in news releases and public reports.
- Schedule and maintain a Cloud-based data backup system and conduct database integrity checks.

Alteration Spectrometry: Outcrop, Soils, Rock chip, Drill Core and Chip Alteration Mapping: Hycore, Hychips, Corescan

- In conjunction with management, prepare budgets and undertake planning and sample selection for in-field, campaign-based spectral acquisition on the outcrop or from hand sample, core, geochemical assay rejects, soils samples and RC-Chips
- Provide leading-edge analytical equipment (PSM, PXRF and similar) and manage permits and logistics to import and transport spectrometers to field sites
- Provide an accredited technician to acquire spectral profiles from rock-chip and soil samples in-field
- Supervise the operation of sample acquisition equipment by field assistants and manage acquisition productivity
- Provide sample selection advice, coordinate sample transport and spectral data distribution and GIS integration
- Spectral processing using Global Ore proprietary algorithms to generate alteration mineralogy and composition vectors
- Visualise in plan, section or 3D, spectral mineralogy and composition vector datasets, integrate with additional geological geochemical and geophysical datasets
- Develop alteration models to understand fluid pathways, system zoning, erosional levels, depth/direction to potential mineralised zones for projects and JV partners to focus detailed exploration including drilling
- Build technical interpretations that assist in highlighting project prospectivity for business development activities



Field data acquisition, database design, drillhole targeting & resource modelling

Remote Sensing Acquisition, Processing and Interpretation

- Assess requirements and identify cost-effective sensors or satellites for image acquisition
- Plan and "task" new satellite data acquisition and/or identify cloud-free imagery stored in online databases and convert to a format that can be processed using proprietary Global Ore algorithms
- Perform specialised spectral data processing to produce alteration mineral occurrence and abundance maps and/or digital elevation models and/or false colour imagery and/or base imagery over exploration targets and supply to Global Ore's targeting team and field geologists
- Integrate alteration mineral mapping products with geology, geophysics, field data and structural interpretations as part of integrated targeting
- Collaborate with field teams to ground-truth anomalies associated with mineralisation indicators

Marketing and Promotion

Website:

- Assist in the design and construction of your website to optimize presentation of your message
- Work with your company's QP / CP or Investor Relations Manager, to build figures and text that best present your Corporate message and projects attributes
- Support your team to keep your website materials up to date and relevant to your company's evolving story

News release:

- Compile, validate and interpret your exploration results for the preparation of NI43-101 and JORC compliant news release in conjunction with your company's QP / CP or Investor Relations manager.
- Draft eye-catching figures and tables for your news releases that optimally present the message to your investors
- Review your news releases for technical accuracy and completeness prior to distribution

Corporate or Project presentations;

- Work with Senior Technical or Investor Relations management to prepare and draft technical materials, promoting your project to potential Joint Venture partners, at investor conferences or for analyst tours.

Business development

Global Ore Discovery has a track record for delivering value to explorer's business development activities via

- Portfolio building driven by integrated GIS prospectivity and risk analysis to guide staking of free ground targets or focus your project acquisition processes to optimize the calibre of your project inventory
- Preparing and validate your project databases and project presentation materials so they are delivered to a high standard, to potential Joint Venture partners and investors
- Setup and manage your virtual data room so you can deliver your message globally 24/7
- Work with your Business Development Manager to match your project with the right potential exploration or development partner and to assist structuring the best deal to enhance outcomes for your investors.



LEADERSHIP AND MANAGEMENT



STEPHEN NANO – DIRECTOR AND PRINCIPAL GEOSCIENTIST

Stephen has over 30 years international experience in the exploration and mining industry. He is a founder, director and senior consultant of Global Ore Discovery. He has over 15 years' experience in running successful public listed and private exploration companies in Canada and Australia where he has served as Director, CEO and Vice President of Exploration. Mr Nano has extensive knowledge of precious metal and copper deposits and has a track record for attracting investment to advance exploration and build shareholder value. He is a fellow and Chartered Professional Geologist with the Australasian Institute of Mining and Metallurgy and a member of the Australian Institute of Company Directors. Mr. Nano is a Qualified Person as defined under NI 43-101.

EDUCATION

- University of New England, NSW, Australia – BSc (Hons) (Geology)

PROFESSIONAL MEMBERSHIP

- Fellow, Australasian Institute of Mining and Metallurgy
- AusIMM Chartered Professional (Geologist)
- Member, Australian Institute of Company Directors
- Member, Society of Economic Geologists

EXPERTISE

- 30 years' experience as economic geologist across a wide range of terrains and deposit types, globally
- Appointed to senior management and technical roles with large international miners and junior exploration companies
- Over 12 years in corporate management roles as founder, officer, director and CEO of successful publicly listed and private mineral and energy exploration companies.
- Directly contributed to the discovery of several multimillion ounce gold and silver deposits and large copper projects.
- Wide ranging expertise in tectonic analysis, target generation and detailed knowledge of epithermal gold-silver, porphyry copper intrusion related gold and Carlin style gold systems.
- An established track record of successful corporate management and building shareholder value through discovery and resource definition



GEOSCIENCE. CORPORATE DEVELOPMENT. CONSULTING.

GOLD · SILVER · COPPER · COBALT · COAL · LITHIUM · URANIUM
· NICKEL · LEAD · ZINC · VANADIUM · PHOSPHATE

Head Office

+61 7 3613 8800
contactus@globalorediscovery.com
6/1 Fort Lane Milton QLD 4064, Australia

BUSINESS MANAGEMENT TEAM



JUSTIN SCOTT – OPERATIONS AND BUSINESS DEVELOPMENT MANAGER

Justin has worked with Global Ore Discovery for over 6 years in several capacities, as a Senior Technical Consultant and most recently as our Operations and Business Development Manager. Justin has over 15 years' experience in the natural resources industry across a wide spectrum of exploration, appraisal, mining, rehabilitation and research activities.

EDUCATION

- University of Queensland, QLD, Australia – BSc (Earth Sciences)
- University of Queensland, QLD, Australia – MPhil (Geostatistics)
- University of Melbourne, Grad Cert. Project Management

EXPERTISE

•Identifying partnership opportunities for Global Ore Discovery and our clients and for developing our workforce recruitment solutions.

•Justin's expertise lies in his ability to apply geostatistics to natural resource challenges, including drill hole spacing optimisation, resource estimate risk quantification and coal blending.

•He has led teams of specialists in integrated orebody targeting, project appraisals and million-dollar business improvement projects.



ROXANE NANO – CHIEF FINANCIAL OFFICER AND COMPANY SECRETARY

Roxane has been extensively involved with Global Ore Discovery since its inception in 2004. She has a track record for providing astute and timely corporate guidance and financial assurance in challenging and multicultural environments. Roxane has over 30 years Australian and South American experience.

EDUCATION

- University of New England, NSW, Australia – BFinAdmin (Accounting)
- Governance Institute of Australia – GdipAppCorGov

PROFSSSIONAL MEMBERSHIP

- Member, Chartered Accountant of Australia and New Zealand
- Fellow, Institute of Corporate Governance
- Fellow, Institute of Chartered Company Secretaries and Administrators

EXPERTISE

•Her experience extends to audit, company administration and financial reporting, corporate governance, regulatory compliance, capital raising and company secretarial responsibilities.

•Over the past 10 years she has held roles as Chief Financial Officer and Corporate Secretary for private exploration companies operating in Australasia.

•She has held managerial roles in the audit division of KPMG and PWC, two of the Big 4 accountancy firms in Australia, Bolivia and Chile.

•She has extensive knowledge of accounts preparation, office administration and HR practices.

TECHNICAL LEADERSHIP TEAM



DARYL NUNN – DIRECTOR AND PRINCIPAL GEOSCIENTIST

Daryl is a founder and principal geoscientist of Global Ore Discovery. He has spent 18 years as a generative and integrated targeting geologist, consulting to precious metal explorers in the Andes South America, Tien Shan Belt Central Asia, Central America Volcanic Belt Mexico/Guatemala, Indonesia and Tasman Fold Belt Eastern Australia. Daryl has held board and management positions with private exploration companies since 2011.

EDUCATION

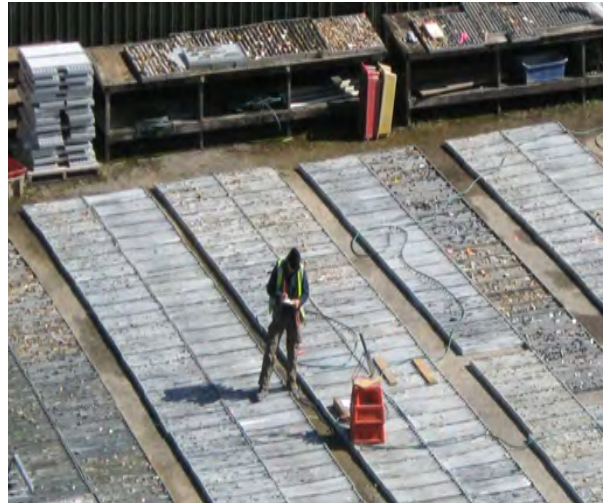
- University of Queensland, QLD, Australia – BSc (Hons) (Earth Sciences)

PROFESSIONAL MEMBERSHIP

- Fellow, Australian Institute of Geoscientists
- Member, Australasian Institute of Mining and Metallurgy
- Member, Australian Institute of Company Directors
- Member, Society of Economic Geologists

EXPERTISE

- Extensive experience in exploration and drill hole program design, management and implementation.
- Contributed to virgin system discoveries and new mine resources in the Maricunga gold-porphyry high sulphidation belt, Patagonia low sulphidation gold-silver province and low sulphidation gold-silver systems in Eastern Australia.
- His 3D geological interpretation, project evaluation and modelling experience spans several mineralisation styles including porphyry copper/molybdenum deposits, intrusive related/mesothermal gold, uranium and coal.
- Expert at using integrated GIS, (developing) geological models and interpreting advanced spectral alteration mapping to analyse mineral systems, identify quality and novel targets and unlock unrealised value in exploration assets



DARREN OSBORNE - SENIOR CONSULTANT EXPLORATION AND MINING

Darren is a Senior Consultant with a demonstrated track record of adding value to mining & metals projects focused on gold. Technically proficient in drilling, 3D modelling, structural geology and GIS, Darren's specialist skill is his ability to integrate data from multiple sources to produce mine scale maps and long sections that serve to identify and prioritise targets. Darren was published in the AUSIMM Monograph of Australian Ore Deposits and Economic Geology. He is highly effective with Vulcan, Mapinfo/Discover 3D, Micromine, aQuire, MS Office, Leap-frog and GoCad and has developed a strong safety awareness from significant time spent on active mine sites.

LOREN NICHOLLS - SENIOR GEOLOGIST GEOCHEMICAL AND SPECTRAL TARGETING

Loren is a talented and passionate gold explorer with nearly 10 years' experience in low sulphidation and high sulphidation epithermal systems, porphyry deposits and intrusion-related gold systems across diverse terranes (QLD, Fiji, NSW, WA). Loren's technical ability developed by integrating multiple datasets and technologies to generate geological models and target ranking systems; including geochemical datasets, spectral analyses, geophysical surveys, structural data, field observations and historical datasets in both brownfields and greenfields environments. She has excellent presentation and communication skills, clearly delivering technical outcomes to management and wider audiences. Loren is highly proficient in Micromine, Iogas, Acquire, Mapinfo/Discover, The Spectral Geologist, Coreshed, and Leapfrog.

Dr. ADRIAN CORVINO - SENIOR GEOLOGIST STRUCTURAL GEOLOGY SPECIALIST

Adrian joined Global Ore Discovery with 20 years geological mapping experience in remote and complexly deformed terrains and ten years in mineral exploration. Adrian has an extensive academic publication track record and brings a systematic approach to structural analysis, core logging and integrated interpretation. He has experience in several countries, mineralisation styles, and commodities including turbidite-hosted vein gold, granitoid hosted vein gold and uraniumiferous leucogranites.

GEOSCIENCE. CORPORATE DEVELOPMENT. CONSULTING.

GOLD · SILVER · COPPER · COBALT · COAL · LITHIUM · URANIUM
· NICKEL · LEAD · ZINC · VANADIUM · PHOSPHATE

Head Office

+61 7 3613 8800
contactus@globalorediscovery.com
6/1 Fort Lane Milton QLD 4064, Australia

DATABASE, SPATIAL INFORMATION AND SPECTRAL SERVICES



WILLIAM EVANS – SENIOR IT CONSULTANT AND EXPLORATION TECHNOLOGY SPECIALIST

William has over 15 years' experience in the Information Technology industry, he is a qualified scientist and has been managing Global Ore Discovery's technology strategy since 2010. William develops innovative and effective ways for our clients to operate and explore more efficiently, securely and effectively with technology.

EDUCATION

University of Queensland, QLD, Australia – BSc

PROFSSIONAL MEMBERSHIP

Member, Information Technology Professionals Association

EXPERTISE

- William has provided Managed IT support and services for our clients in Australia, Canada, Argentina, Chile and Peru, with his unique language and cultural experience
- He has worked to bridge the technology gap between field operations and the head office, leveraging his understanding of the exploration sector and GIS systems
- William has established an IT security-first culture, both internally and for our clients, adapting to the rapidly changing security challenges of modern IT
- He has designed, deployed, migrated and managed JORC and NI 43-101 compliant geochemical database systems for our clients, and built innovative mobile field mapping and geological data collection systems for field geologists in some of the harshest environments on the planet
- William's helped clients to identify IT workflow bottlenecks and developed solutions replacing clunky Excel and legacy database systems with collaborative, cloud-based platforms such as Quick Base, at a fraction of the cost of traditional ERP systems
- He is also proficient in geological spectroscopy, is licenced for Portable X-Ray equipment operation, and has undertaken many spectral geology projects that have identified alteration zones, using Global Ore Discovery's PSM3500 infrared spectrometer.



DEAN HARMSTON – MANAGER SPATIAL INFORMATION AND SPECTRAL SERVICES

Dean has worked for Global Ore for over 10 years, applying remote sensing data interpretation to mineral exploration in low/high sulphidation epithermal and porphyry systems. Dean is an expert at remotely mapping of alteration systems for epithermal Au/Ag, porphyry and high sulphidation epithermal Au/Cu/Mo systems, having worked on multi-commodity deposits and prospects across Central and South America, Central Asia and Australia. A key benefit for clients has been Dean's field follow up of anomalies using Global Ore's fully portable SWIR spectrometer. In combination, these techniques have been highly effective in regional targeting of remote areas around the world.

EDUCATION

University of Southern Queensland - Currently undertaking a bachelor of spatial science technology

EXPERTISE

- Dean has extensive knowledge when it comes to satellite imagery; WorldView, Aster, Landsat, Ikonos, Hyperion.
- He is responsible for developing advanced techniques for image screening, acquisition, processing and validation.
- Dean is expert at remotely mapping alteration systems associated with epithermal gold/silver, porphyry and high sulphidation epithermal gold/copper/molybdenum systems, having worked on multi-commodity deposits and prospects across Central and South America, Central Asia and Australia.
- Dean was one of the first people in Australia to apply PSM-3500 field portable spectrometry to minerals exploration. He develops innovative algorithms for the analysis of shortwave infra-red spectral data which assist in focussed exploration and discovery Global Ore Discovery's PSM3500 infrared spectrometer.

GLOBAL ORE'S DATABASE AND OPERATIONS SERVICES TEAM...

ANITRA ROSS – SENIOR DATABASE GEOSCIENTIST

Anitra has 25+ years of exploration experience working on Archean and Proterozoic Au, Porphyry Cu and Epithermal Au-Ag. Anitra is expert in QAQC, data validation and geochemical analysis. She has produced QAQC guidelines, conducted laboratory audits and been responsible for QAQC monitoring on NI-43101 and JORC reported resources. She has associated skills in dataset compilation, database management and geochemical evaluation.

Anitra's attention to detail and understanding of statutory requirements provides our clients certainty when exploration results are being released to market whether in North America or elsewhere around the globe.

MICHAEL TALBOT – SENIOR GIS OPERATIONS SPECIALIST

Michael has over 25 years experience in the industry working in geology, hazard mapping and contaminated site assessment. Michael is a skilled GIS operator with a Masters of Geographic Information Science. At Global Ore Discovery Michael undertakes a range of activities from spatial analysis and target modelling to cartographic design, technical/promotional material production and statutory reporting.

LUIS ALVAREZ – SENIOR GIS OPERATIONS SPECIALIST

Luis has over 7 years experience working in mineral resources, marine and environmental sciences, incorporating advanced spatial data analysis and GIS to map and model topography, bathymetry and landscape processes. He is skilled in ArcGIS, MapInfo and Global Mapper software, incorporating python and SQL coding into workflows. Luis manages spatial databases and GIS datasets while assisting in spatial data analysis and preparing high quality cartographic maps and spatial data products for our clients.

DAVID ROSEWALL - SENIOR GEOLOGIST OPERATIONS SPECIALIST

David joined Global Ore Discovery as an experienced geologist with 20+ years of experience, planning, implementing and managing exploration and mine development programs in uranium, gold and base metals. Previously working with companies such as Areva, Cameco and Normandy David has an ability to quickly form highly productive teams and establish exploration management processes to take projects forward on time and within budget. On behalf of Global Ore clients, he oversees exploration program design, field operations and statutory compliance around Australia. David was directly involved in the discovery of Beverley 4-Mile uranium.

JAYE HILL- ENVIRONMENTAL AND SPECTRAL SCIENTIST

Jaye is a passionate environmental scientist with over 15 years in industry. Jaye has worked on contaminated lands projects across industrial, residential and agricultural sites in Australia and New Zealand. She also has a keen understanding of Environmental Protection legislation and reporting obligations. In recent years Jaye has turned her attention to research and is currently undertaking a PhD in proximal soil sensing to measure and map soil nutrients. At Global Ore Discovery Jaye is responsible for tenement administration as well as undertaking environmental reporting.



CONSULTING. COMMODITY EXPERIENCE. DISCOVERIES.

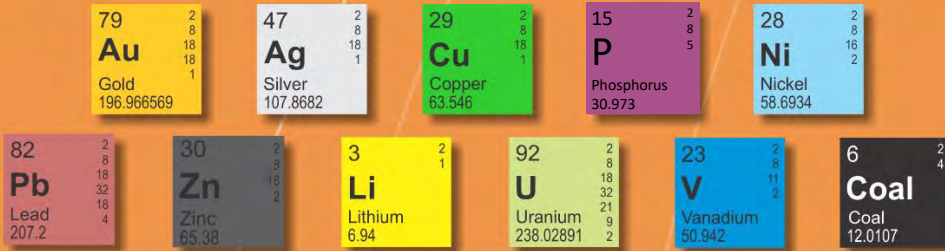
GOLD · SILVER · COPPER · COBALT · COAL · LITHIUM · URANIUM
· NICKEL · LEAD · ZINC · VANADIUM · PHOSPHATE

Head Office

+61 7 3613 8800
contactus@globalorediscovery.com
6/1 Fort Lane Milton QLD 4064, Australia

DISCOVERY & PORTFOLIO BUILDING FOR MINERALS & ENERGY

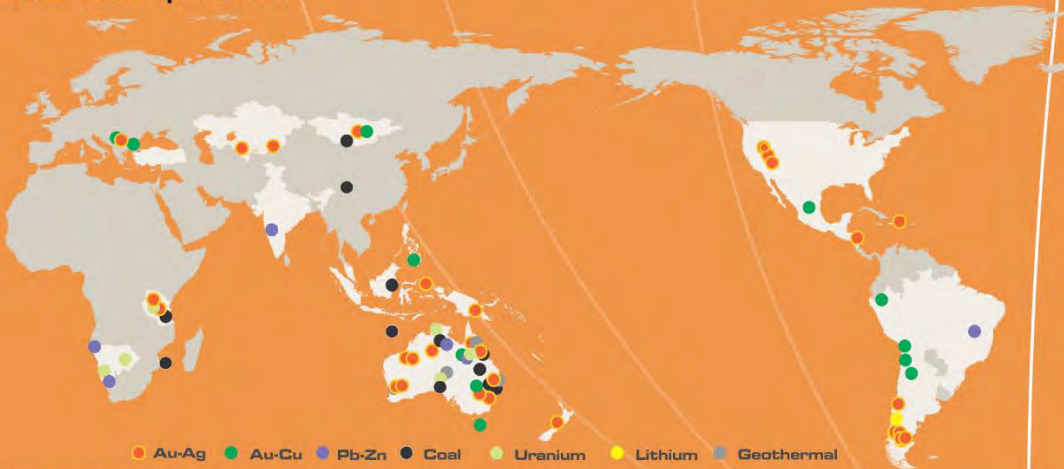
Broad Commodity Range



Skills & Expertise



International Experience



Corporate Services



Stock Exchange Reporting

Competent persons and content generation for ASX & NI43-101 news releases



Presentations & Promotional Material

High quality corporate and technical presentation material generation

CONSULTING. COMMODITY EXPERIENCE. DISCOVERIES.

GOLD · SILVER · COPPER · COBALT · COAL · LITHIUM · URANIUM
· NICKEL · LEAD · ZINC · VANADIUM · PHOSPHATE

Head Office

+61 7 3613 8800

contactus@globalorediscovery.com

6/1 Fort Lane Milton QLD 4064, Australia