

# GLOBAL ORE DISCOVERY

Consulting. Commodity Experience. Discoveries.

An Introduction to Global Ore Discovery  
Technical Services for the Minerals Industry

# Leading Corporate Development and Geoscience Consultancy

## Corporate Development and Geoscience Consulting Services



**Corporate Strategy**  
Project Acquisition / JV / Vend  
Strategic Marketing  
Fundraising



**Exploration Management**  
Program Design  
Integrated Interpretation



**Corporate Secretarial**  
Accounting  
Business Services



**Orebody Knowledge and**  
Integrated Mineral Systems  
Analysis for Targeting



**Project Generation**  
and Portfolio Building



**IT Systems Design & Support**  
Tailored Data Management  
QA/QC Protocols & Reports  
Database Administration



**Remote Sensing**  
Alteration Modelling  
Interpretation & Vectoring  
Hyperspectral Targeting



**Field Geoscience**  
Resource Definition  
Mine and Field Geologists

[www.globalorediscovery.com](http://www.globalorediscovery.com)



- Founded in 2003, employs industry leading corporate development and geoscience professionals, headquartered in Australia, operates globally for major mining houses, junior explorers and investors.
- Focused On Building Lasting Client Partnerships to Achieve Successful Outcomes and Make Discoveries
- Corporate Development / Strategy / Project Sourcing and Deals / Funding / Tailored Marketing
- Global Deposit and Mineralisation Experience
- Specialist Geoscience Consultants and Experienced Management Team
- Extensive Mineral Systems Knowledge and Successful Discovery Track Record
- Turn-Key Geoscience Teams and Specialist Expertise
- Build and Operate Integrated IT Systems to Capture, Secure and Distribute Data to Maximise its Value
- Tailored Marketing Materials, combined with Integrated Marketing Strategy to Deliver Clear, Concise Messages To Investors
- Corporate Secretarial, Administration Services, Customised Project Budgeting and Accounting Systems

AFRICA • AUSTRALASIA • CENTRAL ASIA • PACIFIC RIM • CENTRAL AMERICA • SOUTH AMERICA

# Our Deposit and Mineralisation Experience is Global

**Significant contributions to discovery, portfolio building, advanced exploration and project evaluations in Global Ore Discovery consultants' careers**

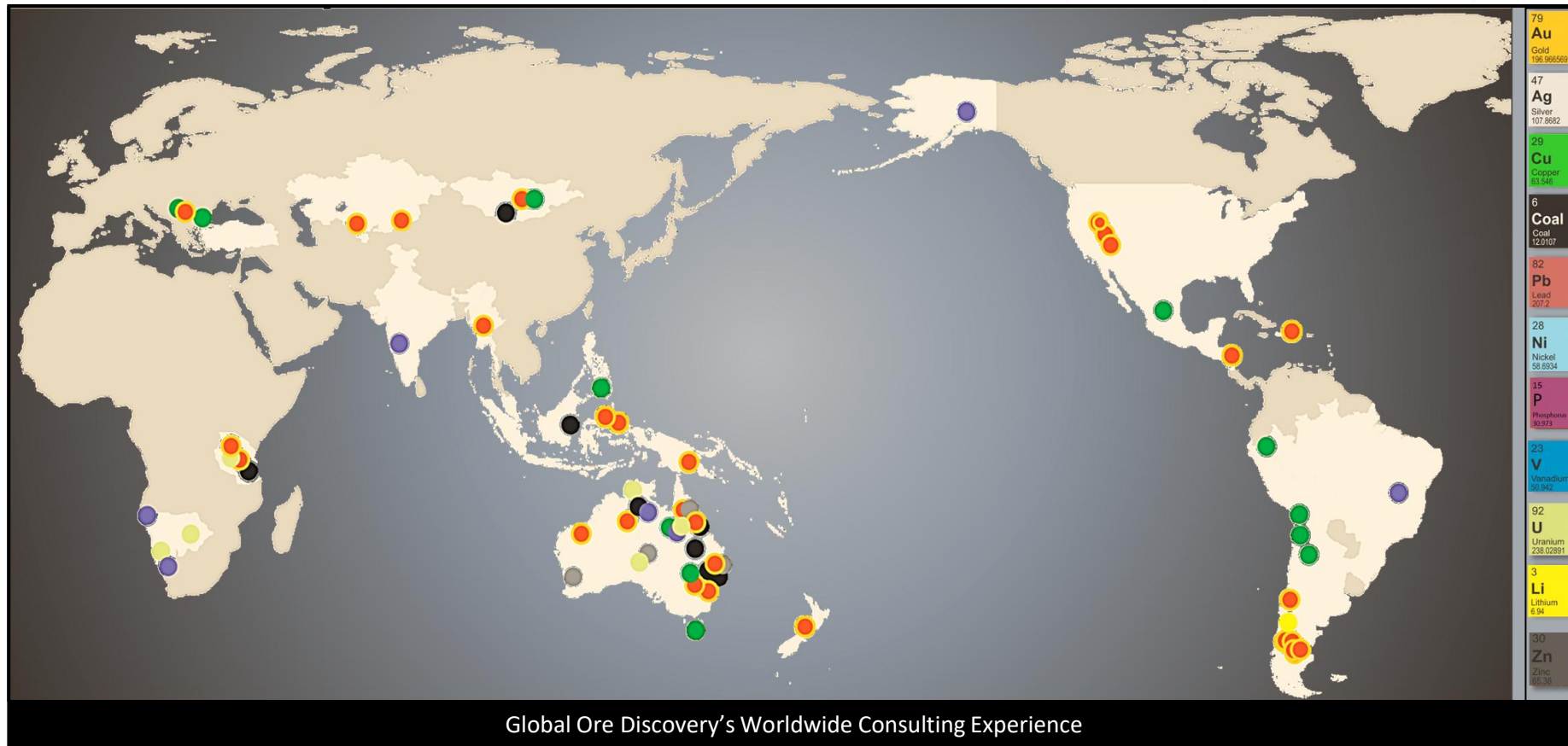
**Discoveries** – Cerro Negro-Eureka<sup>1</sup>, Don Nicholas<sup>1</sup>, Joaquin<sup>1</sup> & Virginia<sup>1</sup>, San Roque<sup>1</sup>, Cracow<sup>1</sup>, Togarachi & Gosowong<sup>1</sup>

**Portfolio Building** – Discovered over 20 epithermal vein systems in Santa Cruz, Gemini & Goldeneye epithermal vein systems Drummond Basin<sup>1</sup>, Woodlark Island<sup>1</sup>

**Advanced Exploration** – Gosowong<sup>1</sup>, Cracow<sup>1</sup>, Cerro Negro<sup>1</sup>, Yandan<sup>1</sup> & Wirralie<sup>1</sup>, Agate Creek<sup>1</sup>, Mt Coolon<sup>1</sup>, Cabrito<sup>3</sup>, Tignamar<sup>3</sup>, Kerta<sup>1</sup>, Favona<sup>1</sup>, Telfer & Lihir,

**Evaluation Projects** – Tampakan<sup>2</sup>, Pueblo Viejo<sup>2</sup>, Agua Rica<sup>2,3</sup>, Lake Cowal<sup>4</sup>, Yandan East<sup>1</sup>, Tashlaka<sup>1</sup>, Pajingo<sup>1</sup>

1 = Low Sulfidation Epithermal, 2 = High Sulfidation Epithermal, 3 = Porphyry Copper Molybdenum, 4 = Porphyry Copper Gold



# Advisors to Funds, Publicly Listed Companies and Private Ventures



Market Cap. \$18.4 B  
ASX : EVN / Gold



Market Cap. \$197.42 M  
TSX-V : MOG / Copper / Gold



Market Cap. \$79.48 M  
ASX : BSX / Nickel / Copper / PGE



Private  
Vanadium / Oil Shale



Market Cap. \$79.19 M  
ASX : TNC / Copper



Market Cap. \$8.7 B  
ASX : SFR / Copper



Market Cap. \$ 1.51 B  
ASX : SRL / Nickel / Cobalt



Market Cap: \$ 911.37 M  
TSX: ISO / Uranium



Market Cap. \$120.0 M  
TSX-V : ADY / Gold



Market Cap. \$604.57 M  
ASX : AIS / Copper / Gold



Market Cap. \$5.17 B  
ASX : DOW / Mine Services



Market Cap. \$30.84 M  
ASX: IPT / Gold / Copper / Nickel



Market Cap. \$160.1 M  
ASX: GBZ / Gold



Market Cap \$532.82 M  
ASX : CXO / Lithium / Uranium / Gold



Private  
Coal



Private  
Vanadium / Rare Earths

# Our Clients: Major Miners to Junior Explorers



Market Cap. \$79.19 M  
ASX : TNC / Copper

Copper explorer/developer Mt Isa District, Australia with >320 kt (>600m lbs) of Copper resources  
+3 year engagement / Advisory, fund raising in listing and recapitalisation / Technical lead with embedded exploration team.  
Integrated data analysis and targeting, designed and technically manage exploration programs  
→ New Discovery and Mt Oxide Aquilia prospect in 2025  
→ 5th largest copper intercept in 2023.  
→ Prolific new releases, investor ASX updates, media appearances



Market Cap. \$45.68 M  
IDX : ARCI / Gold

>5 Moz Au Low Sulphidation Epithermal vein system , Indonesia.  
Engagement total of 3 years / Brownfield and greenfields discovery focus / Embedded Global Ore technical team / Training  
Designed geological and geophysical programs, integrated data, identified drill targets  
→ Direct contribution of multiple new vein discoveries inc. Araren >3M Oz Au, Kopra Ext. ~1M Oz Au.



Market Cap. \$197.42 M  
TSX-V : MOG / Copper-Gold

Copper- Gold Explorer Developer, Tertiary HSE-Porphyry Belt, Chile/Argentina.  
+3 year engagement / Advisory, fund raising in listing process / Senior Technical advisor, Director  
Integrated program design and management leading to drill program design  
→ approx. +C\$62 Million raised since listing including funds from Global Ore's network of investors  
→ directed +C\$5m surface/geophysics exploration program and drill testing



Market Cap \$225 M  
TSX-V : CUR / Uranium

Uranium Explorer Developer, North America, Argentina and Australia with >250 Mlb U3O8 resources  
3 year engagement / identify resources for acquisitions / Corporate materials and news release support  
Integrated data, identified and secured projects with U resources  
→ A portfolio of advanced exploration/resource projects identified  
→ Low cash cost transaction that delivered >1Mlb U3O8 of high-grade historic resources to the company



Private Transaction

500Mt Vanadiferous Magnetite Ore Deposit Queensland, Australia.  
+ 1 year engagement / identify and secure project with JORC resource  
Technical and project management, program design / secure funding to advance project.  
→ Identified and staked 500Mt Vanadiferous Titanomagnetite deposit proximal to world class infrastructure  
→ Secured A\$5 Million in investment to advance metallurgy, resource and development scoping



# Our Geoscience Consultants and Management Team



**Stephen Nano** BSc Hons. Geology, FAusIMM CPGeo, MAICD, MSEG  
Director and Principal Consultant

Stephen Nano, FAusIMM CP - Director 30 years international experience in the exploration and mining industry. He is a founder, director and senior consultant of Global Ore Discovery. He has over 15 years' experience in running successful public listed and private exploration companies in Canada and Australia where he has served as Director, CEO, Vice President of Exploration and Senior Technical and Business Development Advisor.

Mr Nano has extensive knowledge of precious metal and copper deposits and has a track record for discovery and attracting investment to advance exploration and to build shareholder value. He is a fellow and chartered professional with the Australasian Institute of Mining and Metallurgy and a member of the Australian Institute of Company Director and is a Qualified Person.

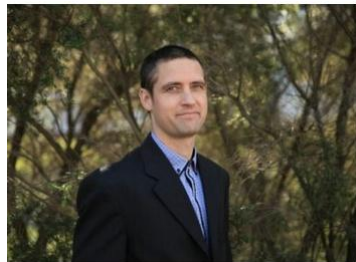


**Daryl Nunn** BSc Hons. Earth Sciences, FAIG, MAusIMM, MAICD, MSEG  
Director and Principal Geoscientist

Daryl has over 20 years experience as a generative and integrated targeting geologist, consulting to precious metal explorers in Indonesia, South American Andes, Tien Shan Belt Central Asia, Central America Volcanic Belt Mexico/Guatemala and Australia's Tasman Fold Belt. He is a Global Ore Discovery founder and principal geoscientist.

Daryl has extensive experience in exploration & drill hole program design, management & implementation and has contributed to virgin system discoveries & new brownfields precious metal resource definition.

Daryl is Fellow of the Australian Institute of Geoscientists. He has held board and management positions with private exploration companies since 2011



**Justin Scott**  
Business Development and Operations Manager

Previously Business Improvement Manager with Downer EDI Mining. Over 18 years' experience in the natural resources industry across a wide spectrum of exploration, appraisal, mining, rehabilitation and resource estimation research activities. Has delivered million-dollar business improvement projects and managed government relationships for clients with projects located across Australia.



**Roxane Nano**  
Chief Financial Officer, FGIA, FCIS

Roxane is a Fellow of the Institute of Corporate Governance and a Fellow of the Institute of Chartered Company Secretaries and Administrators. Roxane has over 30 years Australian and South American experience and a track record for providing astute and timely corporate guidance and financial assurance in challenging and multicultural environments.



**Dean Harmston**  
Manager Spatial Information and Spectral Services

Dean has over 10 years' experience applying remote sensing data interpretation to mineral exploration in Dean is an expert at remotely mapping alteration systems for epithermal Au/Ag, porphyry and High Sulfidation epithermal Au/Cu/Mo systems. Dean's field follow up of anomalies using Global Ore's fully portable SWIR spectrometer has been highly effective for targeting in remote areas.



**Charlotte Brooks**  
Operations and Technical Manager

Charlotte is a discovery-driven exploration geologist with several years' experience targeting and testing near-mine VMS, polymetallic and epithermal deposits across northern Queensland and northern New South Wales. Charlotte has been the lead exploration geologist on directional drilling programs and complements an integrated targeting skillset with proficiency in Leapfrog and Micromine 3D software.



# Our Geoscience Consultants

## **BENJAMIN S – SENIOR CONSULTANT DISCOVERY TEAM LEAD**

Ben has more than 20 years’ experience in eastern Australian geological settings across large, mid-tier and junior miners and explorers. He has a well-developed handle on a spectrum of exploration methodologies and techniques for structurally controlled low sulphidation epithermal gold and porphyry gold-copper deposits. Ben was integral to the discovery of the Kilkenny epithermal gold deposits at Cracow and assisted with defining significant extensions to the Golpu porphyry copper-gold deposit in Papua New Guinea

79  
**Au**  
Gold  
196.966569

47  
**Ag**  
Silver  
107.8682

29  
**Cu**  
Copper  
63.546

82  
**Pb**  
Lead  
207.2

12  
**Mg**  
Magnesium  
24.305

28  
**Ni**  
Nickel  
58.6934

15  
**P**  
Phosphorus  
30.973

23  
**V**  
Vanadium  
50.942

92  
**U**  
Uranium  
238.02891

3  
**Li**  
Lithium  
6.94

30  
**Zn**  
Zinc  
65.38

## **BRENDAN M – SENIOR PROJECT GEOLOGIST GREENFIELD DISCOVERIES AND DIRECTIONAL DRILLING**

Brendan holds a Bachelor of Applied Science from Curtin and has 20 years relevant experience including 15 as a geologist including 7 years with a top-tier, innovative, belt-scale explorer. Brendan’s track-record for greenfields exploration discoveries and deep directional drill program management provides capacity in Global Ore’s frontier exploration capabilities.

## **PETER N – EXPLORATION GEOSCIENTIST TARGETING AND 3D SPECIALIST**

Peter is an adept field exploration geologist with advanced Micromine skills and a strong background in economic geology. He has applied well developed mineral systems knowledge to exploration program design, target generation and prospect ranking. He takes a pragmatic, evidence-based approach to exploration that has been integral in identifying mineralisation in ground overlooked by previous explorers.

## **JAYE H – ENVIRONMENTAL AND SPECTRAL SCIENTIST STATUTORY REPORTING AND COMPLIANCE LEAD**

Jaye is a passionate environmental scientist with over 15 years in industry. She is a key member of Global Ore’s team, including the spectral and geochemical data acquisition and training group, logistics support and statutory compliance teams. Jaye has a highly developed understanding of legislation having worked in tenement administration across multiple jurisdictions.

## **QUINTON H – PRINCIPAL CONSULTANT STUDIES LEAD AND GEOSCIENCE SPECIALIST**

Quinton is an experienced minerals explorer and project development professional with a demonstrated history of successfully advancing minerals projects. He is skilled in Copper, Zinc, Lead, Gold, Nickel, Vanadium, Lithium, Exploration, Mineral Resource growth, Feasibility Studies and Management. Quinton completed a Doctor of Philosophy degree (Ph.D.) focused in Structural and Economic Geology from Monash University.

## **ALI P – PROJECT GEOSCIENTIST MINERAL SYSTEMS AND DATA INTEGRITY SPECIALIST**

Ali is an experienced geologist with technical expertise including analysing, interpreting and integrating geological data to establish and update geological frameworks and models. Demonstrated experience in database geology processes, complementing his field background and strong academic qualifications. Ali’s mineral systems knowledge and attention to detail provides reliable information to assist clients achieve their objectives.

## **MALCOLM G - PROJECT GEOLOGIST INTEGRATED TARGETING AND HISTORICAL DATA EXPERT**

Malcolm is an exploration geologist and spatial analyst with 10+ years industry experience who was instrumental in the discovery of the Nova-Bollinger Ni-Cu and Baloo Au deposits while working for renowned Sirius Resources. While a geologist Malcolm developed a keen interest in spatial science and completed a post graduate diploma in GIS with distinction in 2017.

## **AYERUSALEM H - SENIOR DATABASE GEOLOGIST DATABASE ADMINISTRATION SPECIALIST**

Eyerusalem has more than 10 years experience in geological and geochemical database administration and highly developed SQL skills. Eyerusalem academic background includes a Master of Science in Geoinformatics from University of Twente and her industry experience spans resource and exploration projects internationally. Eyerusalem’s expertise includes Datashed, MX Deposit and other relational databases.

## **DALE V – SENIOR PROJECT GEOLOGIST FIELD OPERATIONS EXPERT**

Dale has 10 years industry experience in minerals exploration program planning and execution across a range of Sn (W), Co-Ni, graphite, base and precious metals projects. Dale is adept with both Micromine and Leapfrog and holds a Bachelor of Science with Honours from New England University. Dale’s experience base includes over 70,000 m drill program metres, major project environmental approvals and feasibility study coordination.

## **WILLIAM E - SENIOR TECHNOLOGY CONSULTANT IT and DATABASE SOLUTIONS ENGINEER, MITPA**

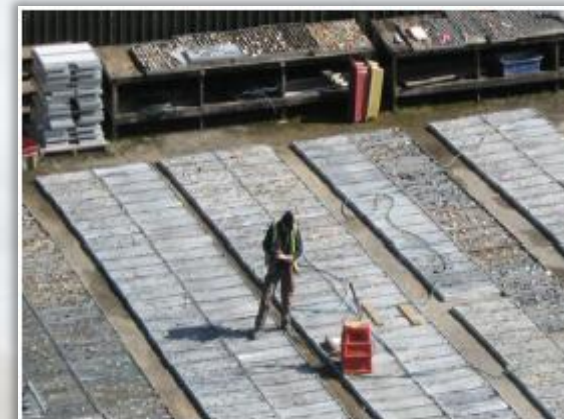
William has over 20 years' experience in the Information Technology industry with an emphasis on challenges in mining and exploration environments. William develops innovative and effective ways for our clients to operate and explore more efficiently, securely and effectively through data capture, storage and distribution technology strategies and deployment solutions.

## **KATALINA R – GIS GEOLOGIST DATA VISUALISATION**

Kat is a geologist and spatial scientist with strong data visualization skills and a passion for transforming complex data into clear, compelling images. Kat holds a Bachelor of GeoScience from QUT. Kat’s experience spans both the public and private sectors including roles with the Queensland government’s remote sensing department and BHP’s exploration division.

## **ENRIQUE S – EXPLORATION GEOSCIENTIST SPECTRAL INTERPRETATION SPECIALIST**

Enrique is a PhD candidate with experience in Cu-Au-Ag mineral exploration, geometallurgical studies and novel mineralogical-geochemical core analytical techniques. Enrique’s background includes work on porphyry deposits of northern Chile. His research in Chile and Australia focuses on geoenvironmental impact characterisation using myriad analytical techniques.



## **REBECCA A – PROJECT GEOLOGIST LEADING COMPLEX EXPLORATION PROGRAMS**

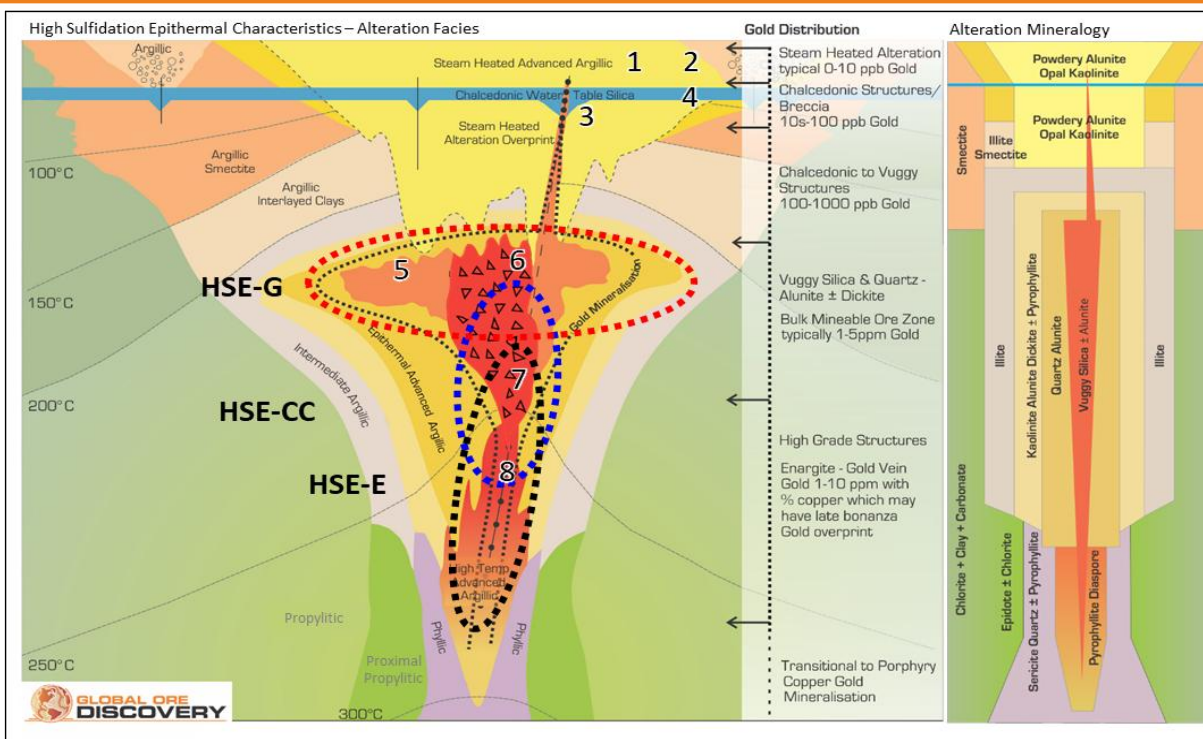
Rebecca is a dedicated and driven Exploration Geologist with a passion for sustainability and over seven years experience in the exploration and mining industry, Rebecca delivers complex exploration programs efficiently. Rebecca has a good working knowledge of eastern Australian statutory processes and is currently studying a Masters of Environmental Management.

## **GARRETT M – PROJECT GEOLOGIST MAPPING AND GEOTECHNICAL LOGGING**

Garrett is an exploration, geotechnical and engineering geologist with approximately twelve years combined experience in the geoscience industry. Garrett’s expertise includes mapping, geological logging, integrated targeting and structural data interpretation.

# Mineral Systems Knowledge and Discovery Track Record

- **In-depth mineral systems knowledge:** of Epithermal Au-Ag (LSE, HSE, IS), Porphyry Cu-Au-Mo, Orogenic gold, IRGS, IOCG and Carlin Style Au.
- **Infield knowledge of many world class gold and copper terrains:** Andean Arcs, Deseado Massif, Central America, Mexico, Great Basin, Indonesian Arc, Papua New Guinea, Mt Isa Inlier, Tanami Province, Drummond Basin, Lachlan Fold Belt, Patterson Province, Pilbara Province, Tien Shan.
- **Detailed knowledge of world class gold and copper deposits including:** Lihir, Gosowong, Tampakan, Toka Tindung, Telfer, Cadia, Lake Cowal, Pajingo, Cracow, Kumtor, Post-Betsie, Deepstar, Pueblo Viejo, Alumbraera, Agua Rica, Cerro Negro, Cerro Vanguardia.
- **Our Team has made significant contributions to multimillion-ounce green fields discoveries and resource expansions at:** Toka Tindung, Gosowong, Telfer, Lihir, Cracow, Cerro Negro, Joaquin.
- **We are specialists in:** Brown fields and regional exploration program design and management globally, Integrated target generation and portfolio building, mineral systems analysis and modelling, spectral geology and remote sensing, Building and integrated analysis of large complex data sets.



Global Ore's extensive mineral systems knowledge and geological modelling experience helps client's define under-recognized exploration potential



Steam Heated Zone  
1,2 Atlas Project, Chile



Water Table Silica  
3,4 La Coipa, Chile



HSE-G Vuggy Silica / Breccia  
5 La Coipa, Chile  
6 El Indio District, Tambo Breccia Chile



HSE-CC Covellite Chalcocite  
7 Agua Rica, Argentina



HSE-E Enargite Zone  
8 El Indio District, EL Indo Veins Chile

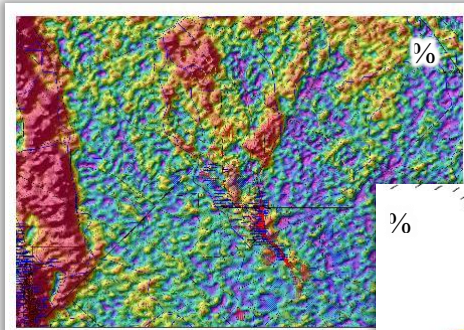
Photos from Stephen Nano

# Global Ore Expertise: Integrated Mineral Systems Analysis

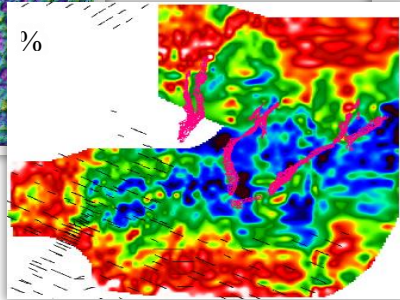
Acquire, Process, Interpret, Select, Vector and Prioritise Targets

Global Ore's team specialise in integrating large complex data with leading edge geoscience, building mineral system models for target generation from orbit to drill bit

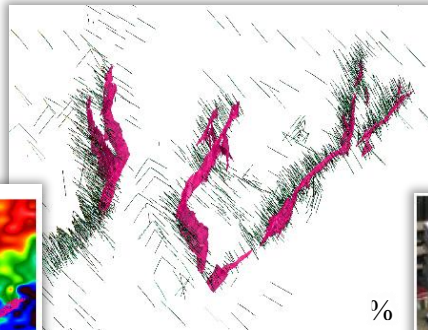
- **Alteration/fluid flow vector definition mapping and modelling:** hyperspectral image interpretations (Hymap Aviris, Hyperion, ASTER, WV3), alteration facies and intensity mapping from geochemistry, alteration indices, ASD/Corescan/Hycore/PIMA, petrography and XRD integrated with alteration field mapping, geophysical interpretation and drill hole logging to define zonation pattern vectors to mineralisation
- **Geochemical zonation of target and path finder elements:** statistical PCA and correlation analysis, elemental threshold definition, data levelling, kriging and gridding, data visualisation, geochemical pattern interpretation, fluid flow vectors, metallogenic system definition
- **Structural kinematics, paragenesis and mapping:** kinematic and paragenetic analysis integrating pitface, core and surface mapping, 2D and 3D geophysical interpretations stereographic and vein density analysis, identification of fluid flow conduits controlling ore
- **Geological modelling and stratigraphic analysis:** stratigraphic interpretation, facies interpretation, litho-geochemistry, immobile element analysis, geophysics interpretation,
- **Geometallurgical domain mapping:** sulfide speciation and clay mineralogy from geochemistry, logging, petrology, swelling or viscous clay/zeolite/ carbonate/carbonaceous host rock definition rock from geochemistry and spectroscopy /Paf, Naf, sulfate mapping from geochemistry, spectroscopy and XRD, rock type modelling for engineering/mechanical properties from geochemistry, spectroscopy and mapping , deleterious element geological zone definition



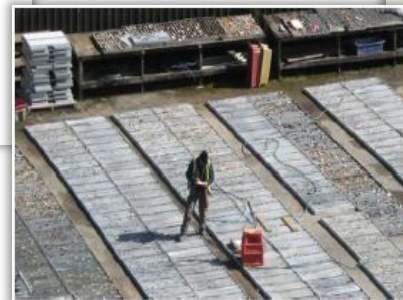
Aeromagnetics geophysical datasets



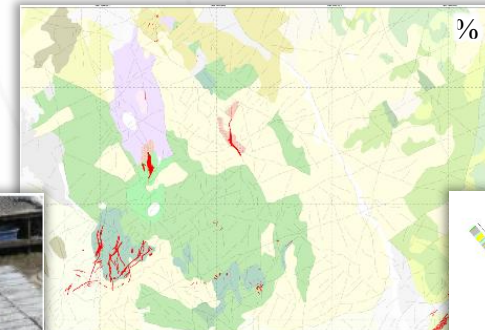
CSAMT prospect scale datasets



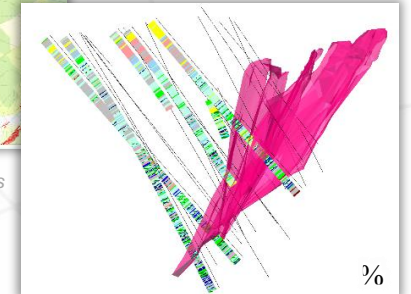
Surface geochemical data



Drill core re-log, re-code and reinterpret



Geology interpretation from radiometrics datasets



Spectral data interpretation and modelling

# Global Ore Expertise: Geophysical Data Analysis

Design, Manage, Process, Interpret, Integrate and Target

**Geophysical survey design, data processing and interpretation experts → optimally targeted exploration programs**

Terrane to deposit scale geophysical surveys for system identification, Target scale data acquisition to identify drill targets

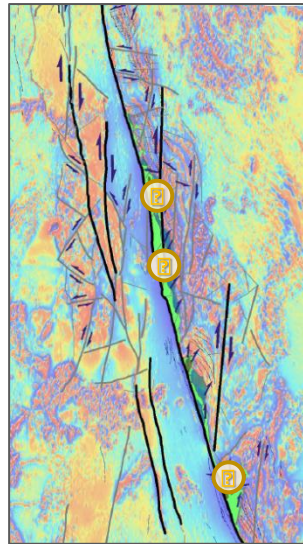
Downhole wireline logging to define ore body extents, extensions and near miss targets

**Airborne:** Magnetics, EM, Gravity, Radiometrics, SAM

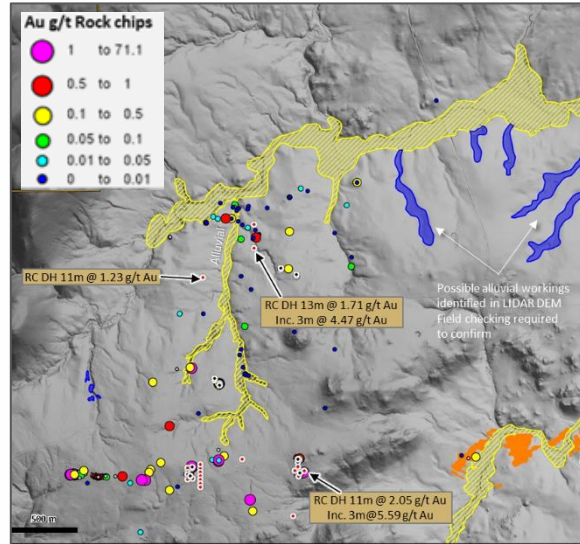
**On the ground:** 3D Seismic, (Passive seismic), CSAMT, SAM, MT, IP, Magnetics, Gravity, Radiometrics, EM, RADAR

**Down the hole:** Televiwer, Gamma, Neutron, Resistivity, Sonic, EM

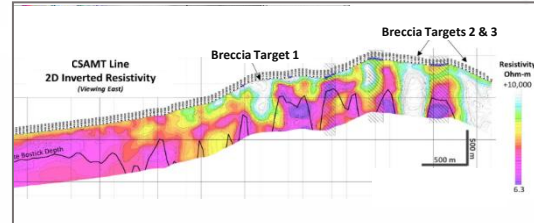
- Select fit-for-purpose geophysical methods to map the key aspects of your mineral system
- Design optimal geophysics surveys, coordinate survey logistics and quality control acquisition to deliver you the best data
- Process your geophysics data with the latest leading-edge techniques to robustly model the geology's physical properties
- Reprocess existing datasets to improve images & outputs
- Optimise how processed data is presented and displayed to extract the most important targeting information
- Integrate your geophysical data and exploration databases to build and deliver geological, structural, mineralisation and alteration models for drillhole targeting



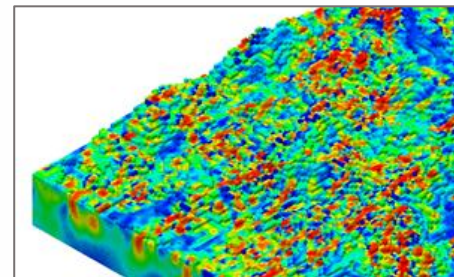
Aeromagnetics Structural Interpretation & Targeting



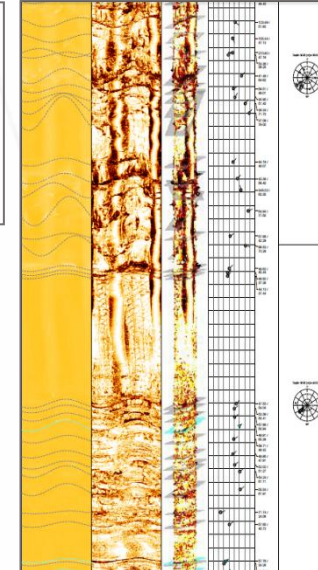
LIDAR High Resolution Imagery Interpretation



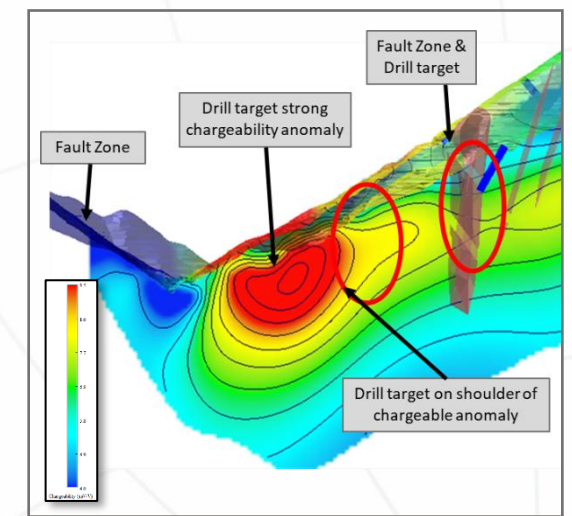
CSAMT Interpretation and Targeting



3D Magnetic Inversion



Optical Televiwer Analysis



Modelling & Targeting of IP geophysics

# Global Ore Expertise: Spectral Geology and Remote Sensing

Acquire, Process and Interpret → Vectors to Mineralisation

## Spectral geology specialists from district to drillbit scale targeting

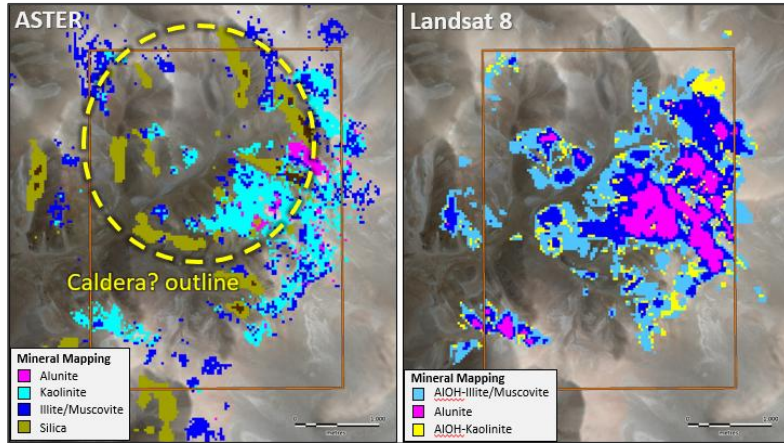
Alteration mineralogy + mineral chemistry and crystallinity + alteration assemblage → alteration vector mapping to prioritise your drill targets

**Satellite:** Hyperion, ASTER, Landsat, ALOS, Worldview Constellation, GeoEYE, RAPIDEYE, RADARSAT, CubeSat

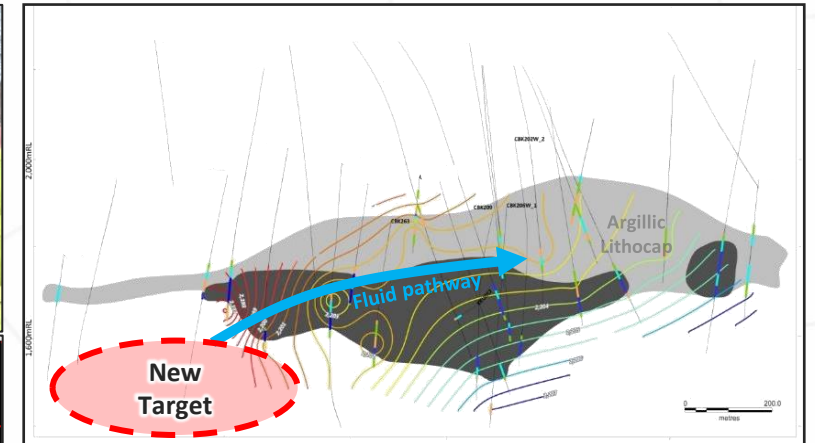
**Airborne:** HYMAP, AVARIS, LIDAR, AISA Systems

**On the ground:** Corescan, HyLogger, ASD, PSM, PIMA, Raman, Terracore

- Optimally design your survey and coordinate with Satellite and Airborne providers to acquire you the best data
- Send your sample pulps to us for spectral analysis or we will travel to your project or core shed to collect spectral measurements
- Validate and process your spectral and remote sensing data
- Interpret and model your data integrating it with your exploration database to develop integrated priority targets
- In-field and/or webinar training programs to develop your in-house capability
- Portable spectrometer hire



Land Sat and ASTER Alteration mapping



Temperature vectors interpreted from mica composition used to vector to fluid source location and identify a new drill target

# Global Ore Expertise: Ore Deposit Knowledge & Modelling

Understand Complex Geochemical, Spatial, Structural and Temporal Relationships

- Global Ore’s multi-disciplinary specialist team uses leading edge geoscience to build integrated Ore Deposit Geology models (2D/3D) that spatially characterise mineral system features
- An Ore Deposit Geology model built by Global Ore integrates key interpretations such as stratigraphy, alteration, geochemistry, veining, mineralogy, structure, geophysics & paragenesis
- Apply understanding obtained from **Ore Deposit Geology Modelling** to inform:

## Resource Definition

- Constrain resource estimates
- Support resource expansion targeting

## Brownfields & Greenfields Exploration

- Project-specific, exploration vectors
- Application of innovative tools to define targets
- Ranking of high drill targets

## Metallurgy

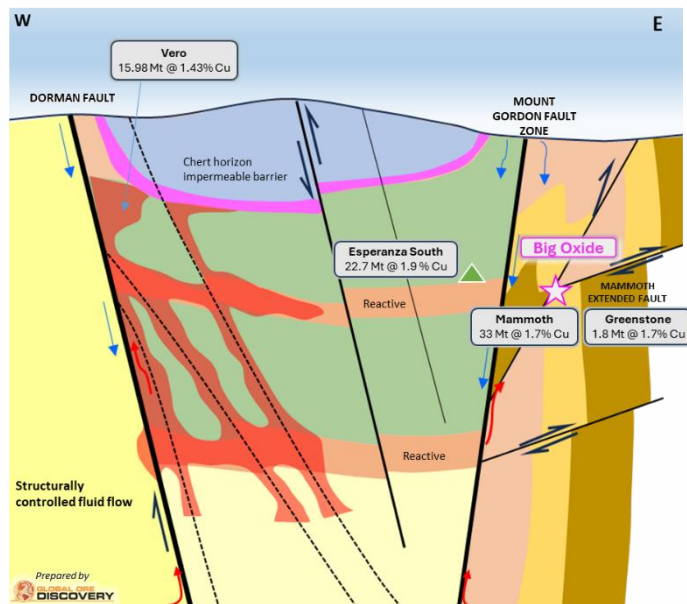
- Copper species models
- Hardness
- Cyanide Consumption

## Operations Engineering

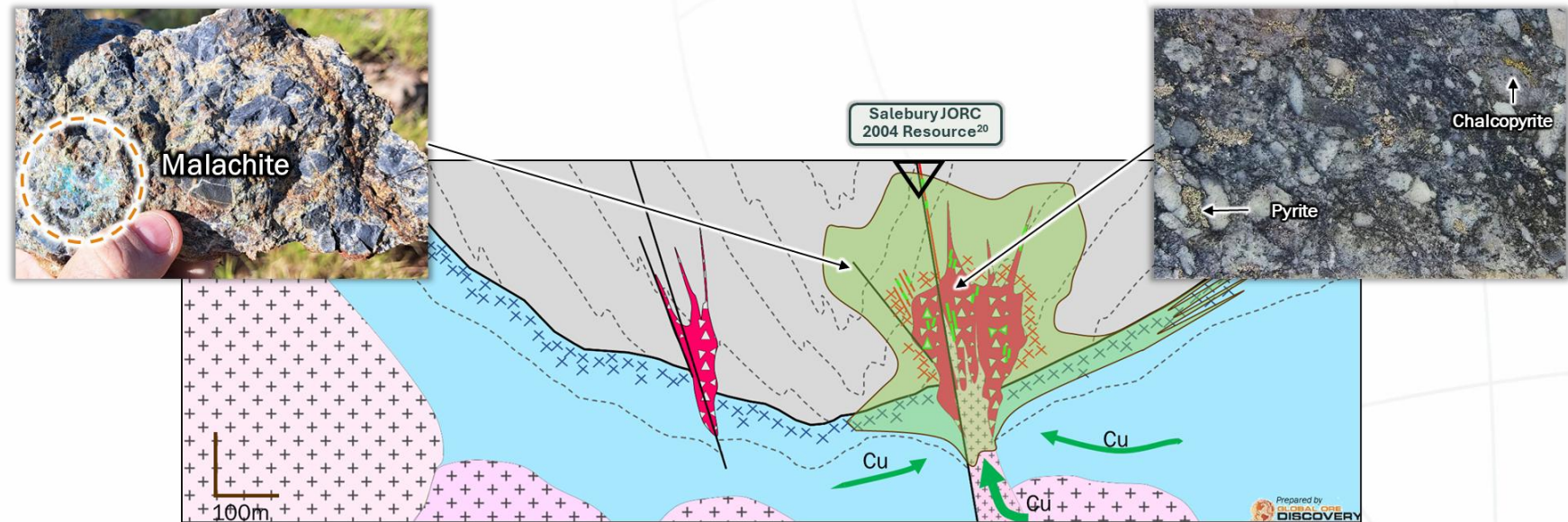
- Ground stability
- Blasting
- Hot water

## Environmental Management

- Waste rock types
- Deleterious element distributions



Mt Isa Western Fold Belt – Cu-Ag Vero & Capricorn Copper style systems



Mt Isa Eastern Fold Belt – IOCG Breccia system at Salebury

# Geochemical Database Administration

## Expert Quality Assurance and Quality Control

**Geoscientific database administration experts → capture, validate, store and distribute geological and geochemical data with confidence**

Structured, validated, secured geoscientific data including surface geochemistry, drillhole, PXRF, ASD data at regional to prospect scales

**One source of truth and real time access across exploration, resource definition, marketing and business development teams**

**Geochemical databases:** MX Deposit, DataShed, Geobank, Acquire, Geolytic

**Geochemical analysis and data display:** Reflex ioGAS, Datamine Discover, SQL SSRS, SciLab, Excel Power Query Reports

**2D and 3D data display integration:** Datamine MapInfo, ArcGIS, QGIS, Micromine, Leapfrog

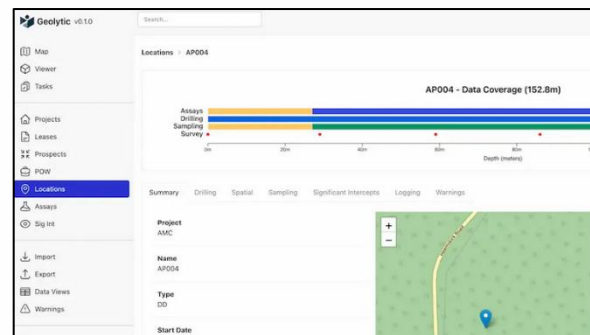
- Unbiased recommendations on scalable, cost-effective geochemical database solutions that are flexible and compatible with your exploration team's workflow and software
- Customised data capture systems and relational database design including library tables, forms and report catalogues, designed to ensure you have information to build deposit knowledge and support JORC and NI43-101 compliant resource estimates
- Experienced specialists to establish all aspects of data collection and QA/QC protocols including control samples, conformance appraisal and process improvements
- Compile, import, validate and integrate historical and public data with your proprietary exploration results
- Custom scripts to automate validation processes specifically for your data
- Data custodians to ensure your surface and drillhole data is accurately recorded, standardised and easily accessible
- Database administrator and user training and support

### COMPLETE GEOCHEMICAL DATABASE ADMINISTRATION



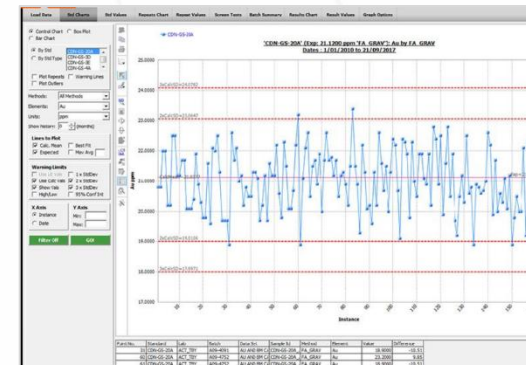
*Geobank – Mature Data Model*

### MODERN WEB DATABASES WITH AI TOOLS



*Geolytic - Modern Web Based DB*

### ROBUST QA/QC ANALYSIS



*DataShed – Best QA/QC Reporting*

### EXPERIENCED PARTNERS



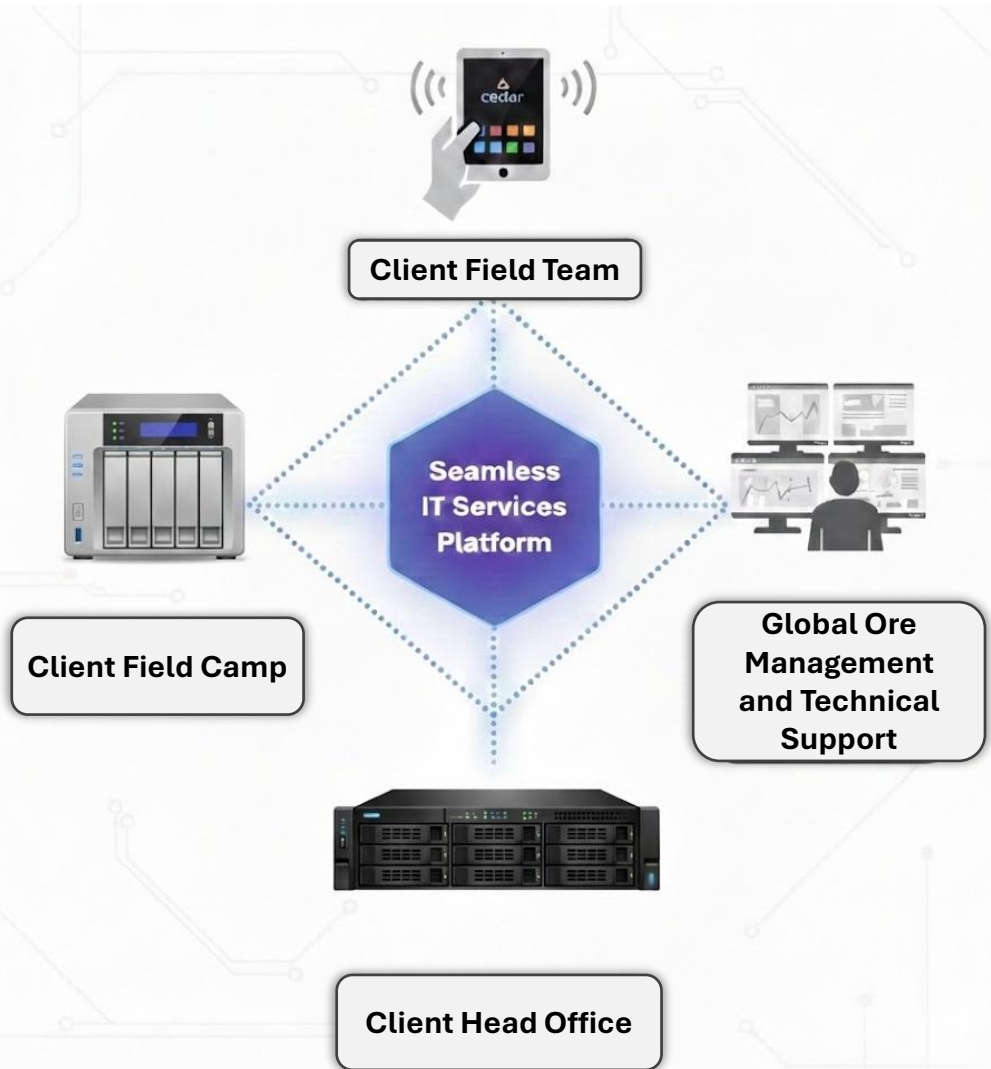
*We are official Maxgeo Datashed Partners for East Coast Australia*

Geolytic



# Global Ore Expertise: Information Technology Solutions

Providing Tailored ITC Solutions to Solve Challenges in Minerals Exploration



**Custom designed, integrated hardware and software solutions for minerals explorers**

**Fit for Purpose:** Independent, vendor agnostic Workflow Analysis and Research to recommend, setup and continually support on premise, public and private cloud IT systems to suit the way your company uses its data. We select, design or custom build the solution that best fits your requirements and budget.

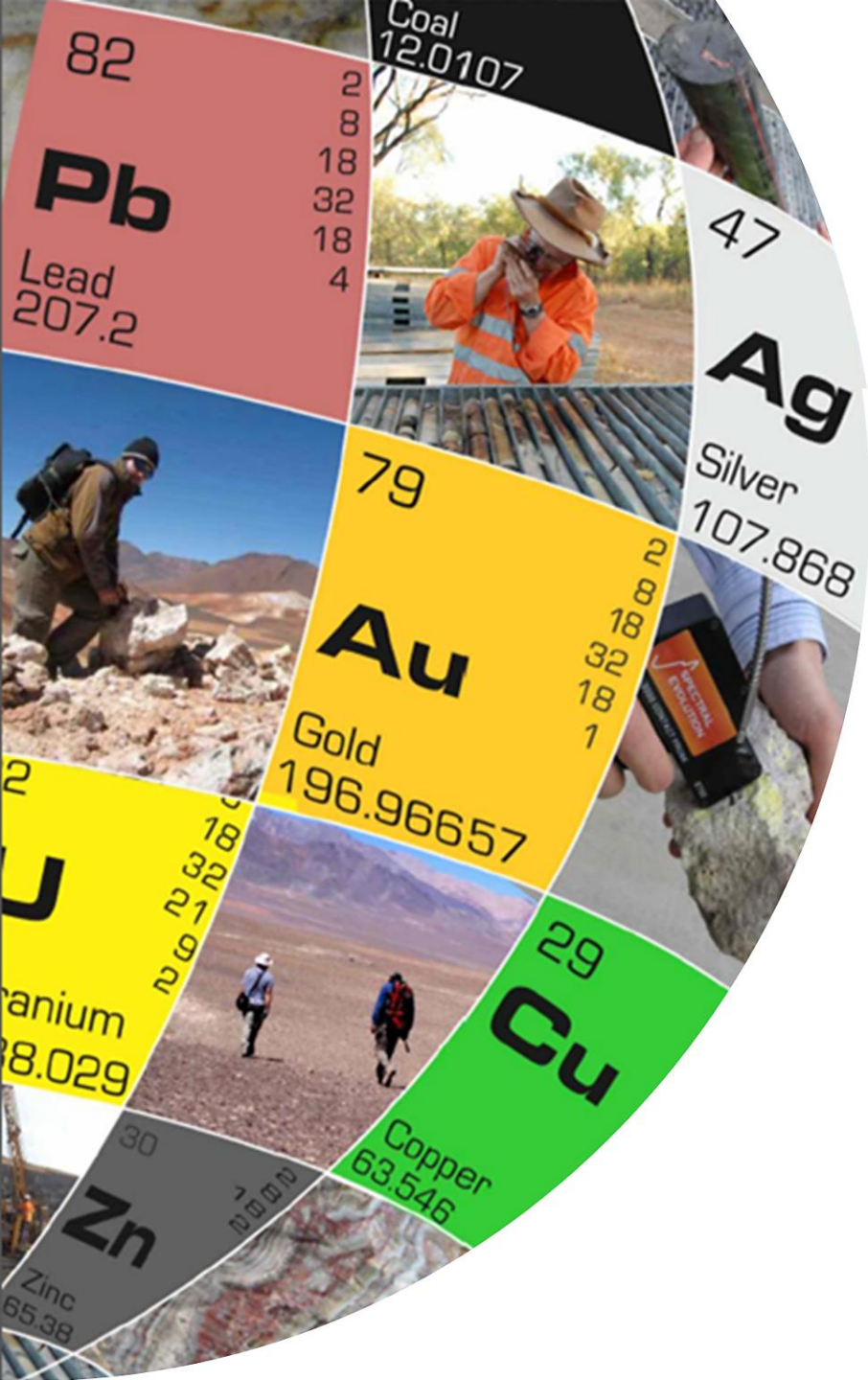
**Leading Edge:** Pushing the boundaries of IT Systems for the mineral sector – our highlights include a private cloud using BitTorrent syncing terabytes of exploration data between mining camps, and custom tools to overcome common incompatibilities with exploration software such as Micromine™ and Leapfrog™ that prevent them from working with Microsoft OneDrive™ or Dropbox™.

**Security First:** IT Security focus from day one – Global Ore was the first Australian exploration consultancy to provide Application Whitelisting built with PolicyPak™ to prevent ransomware since before it became a worldwide threat. We offer Robust and Affordable strategies including AI driven 24x7 security monitoring for securing and backing up on premise and cloud data.

**Expert Support:** Intelligent use of AI based automation and remote-assistance to provide IT support, monitoring and threat remediation and inventory for all client devices, anywhere in the world.

**Cost Effective & Scalable:** Flexible solutions tailored for the tight budgets of our industry – we preference open-source software alternatives, monthly billing cloud services and vendor agnostic hardware with no lock-in.

**Field Data Capture:** Innovative solutions such as ruggedised Samsung Android tablets running custom configured software to visualise and capture data in the field and upload data real time.



# GLOBAL ORE DISCOVERY

Consulting. Commodity Experience. Discoveries.

[contactus@globalorediscovery.com](mailto:contactus@globalorediscovery.com)

Office: +61 7 3613 8800

Mobile: +61 491 045 723

- Confidential and Not For Distribution -